



EDSF Energy Label for automatic doors

WEB PLATFORM v1.0

User Manual

© European Door and Shutter Federation, e.V., 2016

With the collaboration of:

[MEQUONIC]
Engineering to Reality



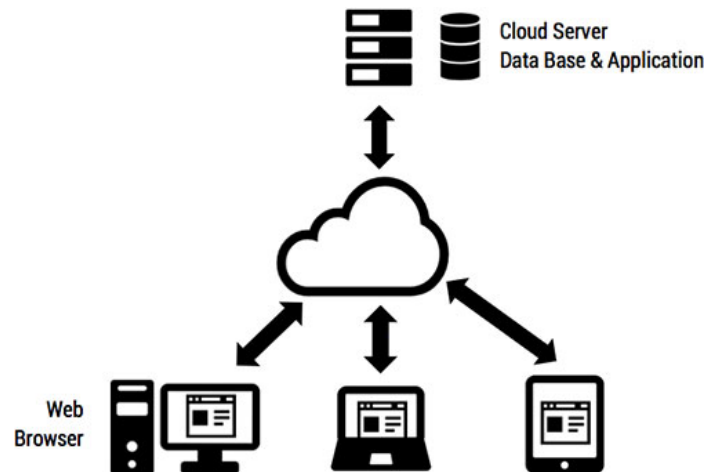
INDEX

1. Introduction
2. Sign up
3. Use
 - 3.1 Basic Access User
 - 3.2 Full Access User



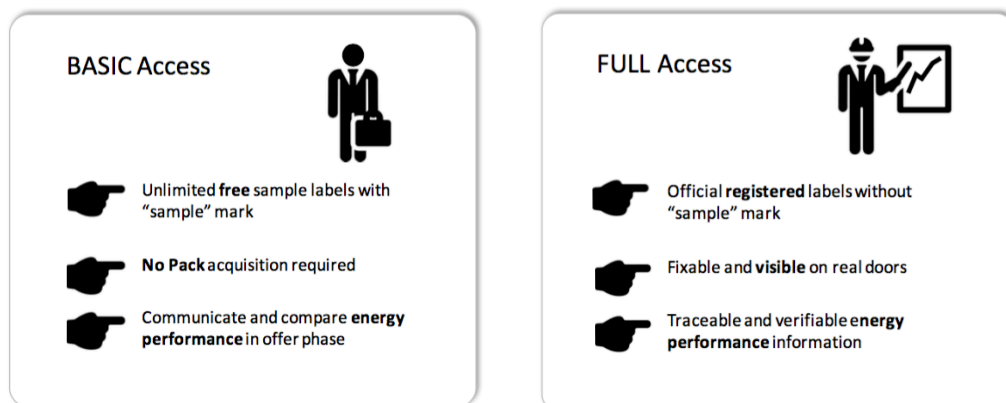
1. INTRODUCTION

The Web Platform allows customers to create and manage Energy Labels in an easy way. All the information is stored on-line, under security and privacy standards.



In the Web Platform www.edsfdoorenergy.com you may find all the information regarding the system.

There are two available account types which use will be explained in this document:





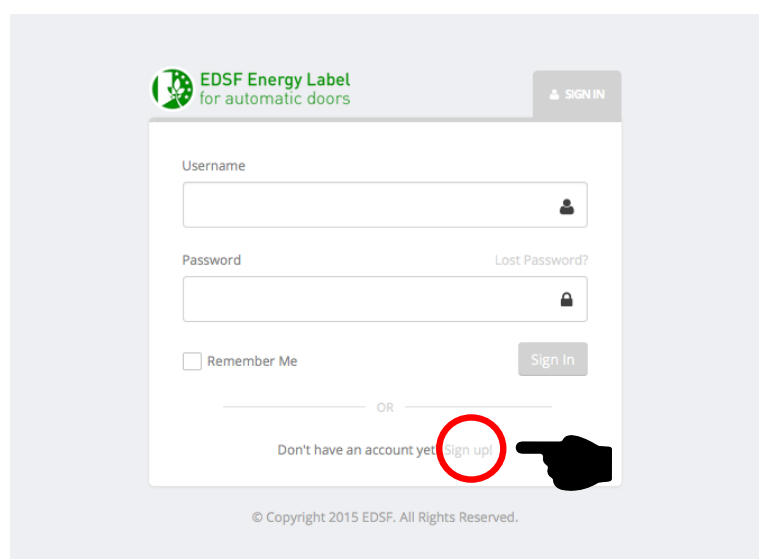
2. SIGN UP

To sign up in the system and create a user, the following process must be followed:

① Access to the Users' Area



② Access to the Sign Up Area





③ Select Account Type

EDSF Energy Label
for automatic doors

Account type

Account type
Select

Basic ACCESS account: Unlimited free sample labels for Sales and Marketing purposes.

FULL ACCESS account: Official registered labels for Production purposes, available under EDSF pricing scheme.

Login data

Username
Password

Email
Password confirmation

Personal data

④ Fill up User Data

EDSF Energy Label
for automatic doors

Account type

Account type
Full access

Basic ACCESS account: Unlimited free sample labels for Sales and Marketing purposes.

FULL ACCESS account: Official registered labels for Production purposes, available under EDSF pricing scheme.

Login data

Username
Password

Email
Password confirmation

Personal data

Name
Position

Surname
Phone

Company data

Name
Email

Address
Phone

Postcode
EDSF Member?

City
National association

Country
Sector

VAT Number
Size

☐ You must accept terms and conditions.

Sign up

Already a member? Sign in

© Copyright 2015 EDSF. All Rights Reserved.

Once that the profile is created, you receive a welcome email confirming that your user is ready to use. You always can update your data in the My Data area of your user page.



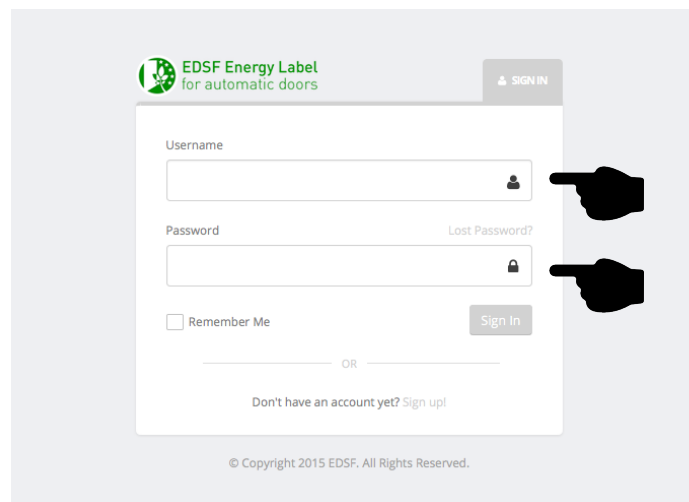
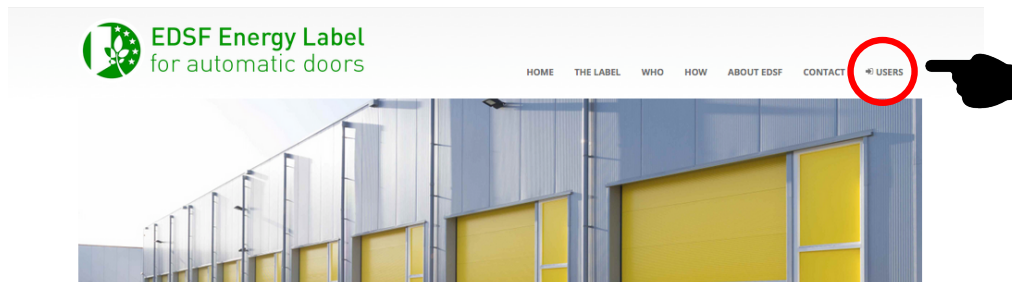
3. USE

3.1 Basic Access User

① Sign In

Once that the profile is created, you access directly to the Dashboard Area.

If you are signed out, then you may access clicking in the Home page Users access and signing in with your User name and Password:



② Label Creation

The Dashboard for Basic Access Users is the following:



EDSF Energy Label for automatic doors

Test User Four
Basic access user

Dashboard

Your account has been updated successfully.

My Labels

Download XLS + New label

Show 10 entries

Search by Ref. or Type:

ID	Ref.	Energy Class	App. Class	Clima Class	Traffic Class	Size Class	Type	U Value	Air Perm.	Open Speed	Actions
1	00002	B	Industrial	Cfb	N3	S2	High Speed Flexible	2,5	12	0,33 [m/s]	Report Label +New
2	000002	A	Industrial	Dfc	N3	S2	Overhead Sectional	3	12	0,5 [m/s]	Report Label +New
4	000000	C	Industrial	Csb	N3	S2	Bi-Folding Horizontal	3	12	0,24 [m/s]	Report Label +New

Showing 1 to 3 of 3 entries (filtered from 11 total entries)

First Previous 1 Next Last

Once in the *Dashboard* area, to create a new label, just click [New Label](#) and you will automatically access to the label creation form. Just fill up then the required fields and confirm the creation to generate a new label.

Just clicking in the [Help “?” icons](#) you will find pop-up windows with the explanation of the different parameters.



EDSF Energy Label for automatic doors

Test User Four
Basic access user

Labels : New

Label parameters

General Data:

Company
Enter Company name

Model
Enter model

Reference
Enter reference

Door Classification Data:

Country ANDORRA Region All regions

Application Industrial

Number of opening cycles per year 40000

Door clear width in [m] 3 Door clear height in [m] 3

Energy parameters

Door Type Overhead Sectional

Thermal transmittance U in [W/m²·K] 2.5

Air permeability L in [m³/h·m²] 12

Opening time in [s] 25

Door leaves weight in [kg] 100

Operating Power in [W] 150

Stand-By Power in [W] 10

Confirm label creation

Label

ENERGY Automatic Door

(Label ref. no.) v. 1.0

Manufacturer:

Model:

Reference: (Text)

A B C D E F

Application Class Industrial

Climate Class Dfb

Traffic Class NS

Size Class SZ

Door Type Overhead Sectional

Thermal Transmittance 2.5 [W/m²·K]

Air Permeability 12 [m³/h·m²]

Opening Speed 0.24 [m/s]

Operating Power 150 [W]

Stand-By Power 10 [W]

EDSF

www.edsfenergy.com



Once that the label is created, a record appears in the My Labels table of the Dashboard, where the main parameters are shown:

EDSF Energy Label for automatic doors

Test User Four

Dashboard

Your account has been updated successfully.

My Labels

Download XLS + New label

Show 10 entries

Search by Ref. or Type:

Id	Ref.	Energy Class	App. Class	Clima Class	Traffic Class	Size Class	Type	U Value	Air Perm.	Open Speed	Actions
1	00002	B	Industrial	Cfb	N3	S2	High Speed Flexible	2,5	12	0,33 [m/s]	Report Label New
2	000002	A	Industrial	Dfc	N3	S2	Overhead Sectional	3	12	0,5 [m/s]	Report Label New
4	000000	C	Industrial	Csb	N3	S2	Bi-Folding Horizontal	3	12	0,24 [m/s]	Report Label New

Showing 1 to 3 of 3 entries (filtered from 11 total entries)

First Previous 1 Next Last

One label can be created using another label as template clicking New in the table:

EDSF Energy Label for automatic doors

Test User Four

Dashboard

Your account has been updated successfully.

My Labels

Download XLS + New label

Show 10 entries

Search by Ref. or Type:

Id	Ref.	Energy Class	App. Class	Clima Class	Traffic Class	Size Class	Type	U Value	Air Perm.	Open Speed	Actions
1	00002	B	Industrial	Cfb	N3	S2	High Speed Flexible	2,5	12	0,33 [m/s]	Report Label New
2	000002	A	Industrial	Dfc	N3	S2	Overhead Sectional	3	12	0,5 [m/s]	Report Label New
4	000000	C	Industrial	Csb	N3	S2	Bi-Folding Horizontal	3	12	0,24 [m/s]	Report Label New

Showing 1 to 3 of 3 entries (filtered from 11 total entries)

First Previous 1 Next Last

You can access to download every Label and Report pdf files in the table. Also, the label list can be exported in Excel format clicking Download XLS:

EDSF Energy Label for automatic doors

Test User Four

Dashboard

Your account has been updated successfully.

My Labels

Download XLS + New label

Show 10 entries

Search by Ref. or Type:

Id	Ref.	Energy Class	App. Class	Clima Class	Traffic Class	Size Class	Type	U Value	Air Perm.	Open Speed	Actions
1	00002	B	Industrial	Cfb	N3	S2	High Speed Flexible	2,5	12	0,33 [m/s]	Report Label New
2	000002	A	Industrial	Dfc	N3	S2	Overhead Sectional	3	12	0,5 [m/s]	Report Label New
4	000000	C	Industrial	Csb	N3	S2	Bi-Folding Horizontal	3	12	0,24 [m/s]	Report Label New

Showing 1 to 3 of 3 entries (filtered from 11 total entries)

First Previous 1 Next Last



3.2 Full Access User

① Sign In

It is done in the same way of the Basic Access.

② Orders

The Dashboard for Full Access Users is the following:

The dashboard displays the following information:

- Signed in successfully.**
- Credit left 153** (indicated by a hand icon pointing to it).
- Last orders** table:

#	Pack	Credit	Status	Value
59	Pack 100	100	Confirmed	50,00 €
58	Pack 50	50	Confirmed	25,00 €
57	Welcome Free Pack	10	Confirmed	0,00 €

- Credit Packs** table:

Pack	Value
Pack 10, 5.0€	10
Pack 50, 25.0€	50
Pack 100, 50.0€	100
Pack 500, 250.0€	500
Pack 1000, 500.0€	1000

- My Labels** table:

Id	Ref.	Energy Class	App. Class	Clima Class	Traffic Class	Size Class	Type	U Value	Air Perm.	Open Speed	Actions
45	0000001	B	Industrial	Dfb	N3	S2	Overhead Sectional	2,42	6	0,3 (m/s)	Report Label New
47	100001	A	Industrial	Dfb	N3	S2	High Speed Flexible	2,5	12	0,5 (m/s)	Report Label New
48	000003X	C	Industrial	Dfb	N3	S2	Overhead Sectional	2,5	12	0,24 (m/s)	Report Label New
49	0000004X	C	Industrial	Csb	N3	S2	Overhead Sectional	5	12	0,24 (m/s)	Report Label New
50	0000005	C	Industrial	Cfa	N3	S2	Overhead Sectional	2,5	12	0,24 (m/s)	Report Label New
51	000006	C	Industrial	Cfa	N3	S2	Overhead Sectional	4,2	12	0,24 (m/s)	Report Label New
53	00007	F-	Industrial	Cse	N3	S2	Overhead Sectional	2,5	12	0,1 (m/s)	Report Label New

Showing 1 to 7 of 7 entries (filtered from 11 total entries)

To create labels, first you have to confirm that you have credits available. This is the number of labels you can create.

If you do not have credits and you need to create more labels, you have to acquire more label packs just clicking on the desired pack in the *Dashboard*. Then a pop-up window appears to confirm the order.



EDSF Energy Label for automatic doors

Signed in successfully.

Credit left: 153

Last orders

#	Pack	Credit	Status	Value
59	Pack 100	100	Confirmed	50,00 €
58	Pack 50	50	Confirmed	25,00 €
57	Welcome Free Pack	10	Confirmed	0,00 €

Credit Packs

- Pack 10, 5.0€
- Pack 50, 25.0€
- Pack 100, 50.0€
- Pack 500, 250.0€
- Pack 1000, 500.0€

My Labels

Download XLS + New label

Show 10 entries

Id	Ref.	Energy Class	App. Class	Clima Class	Traffic Class	Size Class	Type	U Value	Air Perm.	Open Speed	Actions
45	0000001	B	Industrial	Dfb	N3	S2	Overhead Sectional	2,42	6	0,3 [m/s]	Report Labels New

Confirm pack purchase

You are about to purchase Pack 50

This pack contains 50 credits, and is going to be confirmed when we receive the payment confirmation.

To activate your Label Pack, please make the corresponding payment by transfer and send the confirmation to:

billing@edsfdoorenergy.com

Account Data:

MEQUONIC ENGINEERING S.L.
IBAN ES05 2013 0842 9602 0054 7996
SWIFT/BIC CECES33XXX

Once that it is received, we will immediately activate your order and you will have access to your invoice in your orders

Confirm order Cancel

The user then receives an email explaining that the order is made including the instructions to follow.

Once that the payment via transfer is confirmed to billing@edsfdoorenergy.com, the pack is confirmed and activated.

You can check the status of your orders in the central *Dashboard* area. You can also find all your orders and invoices in the *Orders* page, which access you may find on the left of the *Dashboard* area.



Dashboard

Signed in successfully.

Credit left: 153

Last orders

#	Pack	Credit	Status	Value
59	Pack 100	100	Confirmed	50,00 €
58	Pack 50	50	Confirmed	25,00 €
57	Welcome Free Pack	10	Confirmed	0,00 €

Credit Packs

Pack	Value
Pack 10, 5.0€	10
Pack 50, 25.0€	50
Pack 100, 50.0€	100
Pack 500, 250.0€	500
Pack 1000, 500.0€	1000

My Labels

Download XLS + New Label

Show 10 entries

ID	Ref.	Energy Class	App. Class	Clima Class	Traffic Class	Size Class	Type	U Value	Air Perm.	Open Speed	Actions
45	0000001	8	Industrial	Dfb	N3	S2	Overhead Sectional	2,42	6	0,3 [m/s]	Report Label New

My orders

Listing Orders

#	Pack	Credits	Price	Status	Date	Invoice
59	Pack 100	100	50,00 €	Confirmed	03/12/2015 at 12:23PM	⬇
58	Pack 50	50	25,00 €	Confirmed	03/12/2015 at 10:15AM	⬇
57	Welcome Free Pack	10	Free	Confirmed	03/12/2015 at 10:15AM	⬇

③ Label Creation

It is done in a similar way than the basic users. To create a new label, just click New Label and you will automatically access to the label calculation page.



EDSF Energy Label for automatic doors

Signed in successfully.

Dashboard

Credit left: 153

Last orders

#	Pack	Credit	Status	Value
59	Pack 100	100	Confirmed	50,00 €
58	Pack 50	50	Confirmed	25,00 €
57	Welcome Free Pack	10	Confirmed	0,00 €

Credit Packs

Pack	Value
Pack 10, 5.0€	10
Pack 50, 25.0€	50
Pack 100, 50.0€	100
Pack 500, 250.0€	500
Pack 1000, 500.0€	1000

My Labels

Download XLS + New label

Show 10 entries

Id	Ref.	Energy Class	App. Class	Clima Class	Traffic Class	Size Class	Type	U Value	Air Perm.	Open Speed	Actions
45	0000001	B	Industrial	Dfb	N3	S2	Overhead Sectional	2,42	6	0,3 (m/s)	Report Label New
47	100001	A	Industrial	Dfb	N3	S2	High Speed Flexible	2,5	12	0,5 (m/s)	Report Label New
48	000003X	C	Industrial	Dfb	N3	S2	Overhead Sectional	2,5	12	0,24 (m/s)	Report Label New
49	0000004X	C	Industrial	Csb	N3	S2	Overhead Sectional	5	12	0,24 (m/s)	Report Label New
50	0000005	C	Industrial	Cfa	N3	S2	Overhead Sectional	2,5	12	0,24 (m/s)	Report Label New
51	000006	C	Industrial	Cfa	N3	S2	Overhead Sectional	4,2	12	0,24 (m/s)	Report Label New
53	00007	F-	Industrial	Csa	N3	S2	Overhead Sectional	2,5	12	0,1 (m/s)	Report Label New

Showing 1 to 7 of 7 entries (filtered from 11 total entries)

First Previous 1 Next Last

In the calculation page, just fill up then the required fields and confirm the creation to generate a new label.

Just clicking in the Help “?” icons you find pop-up windows with the explanation of the different parameters.



EDSF Energy Label for automatic doors

Test User Two
Full access user

Labels : New

Label parameters

General Data:

Company
Enter Company name

Model
Enter model

Reference
Enter reference

Door Classification Data:

Country ANDORRA Region All regions

Application Industrial

Number of opening cycles per year 40000

Door clear width in [m] 3 Door clear height in [m] 3

Energy parameters

Door Type Overhead Sectional

Thermal transmittance U in [W/m²·K] 2.5

Air permeability L in [m³/h·m²] 12

Opening time in [s] 25

Door leaves weight in [kg] 100

Operating Power in [W] 150

Stand-By Power in [W] 10

Confirm label creation

Label

ENERGY
Automatic Door
(Label ref. no.) V. 1.0

Manufacturer:
Model:
Reference: (Text)

A
B
C
D
E
F

Application Class Industrial
Climate Class D1b
Traffic Class N3
Size Class S2

Door Type Overhead Sectional
Thermal Transmittance 2.5 [W/m²·K]
Air Permeability 12 [m³/h·m²]
Opening Speed 0.24 [m/s]
Operating Power 150 [W]
Stand-By Power 10 [W]

EDSF

www.edsfdoorenergy.com



Like in the Basic Access, once that the label is created, a label record appears in the *My Labels* table of the *Dashboard*, where the main parameters are shown:

EDSF Energy Label for automatic doors

Signed in successfully.

Credit left: 153

Last orders

#	Pack	Credit	Status	Value
59	Pack 100	100	Confirmed	50,00 €
58	Pack 50	50	Confirmed	25,00 €
57	Welcome Free Pack	10	Confirmed	0,00 €

Credit Packs

Pack	Value
Pack 10, 5.0€	10
Pack 50, 25.0€	50
Pack 100, 50.0€	100
Pack 500, 250.0€	500
Pack 1000, 500.0€	1000

My Labels

Download XLS + New Label

Show 10 entries

Search by Ref. or Type:

Id	Ref.	Energy Class	App. Class	Clima Class	Traffic Class	Size Class	Type	U Value	Air Perm.	Open Speed	Actions
45	0000001	B	Industrial	Dfb	N3	S2	Overhead Sectional	2,42	6	0,3 (m/s)	Report Label New
47	100001	A	Industrial	Dfb	N3	S2	High Speed Flexible	2,5	12	0,5 (m/s)	Report Label New
48	000003X	C	Industrial	Dfb	N3	S2	Overhead Sectional	2,5	12	0,24 (m/s)	Report Label New
49	000004X	C	Industrial	Csb	N3	S2	Overhead Sectional	5	12	0,24 (m/s)	Report Label New
50	0000005	C	Industrial	Cfa	N3	S2	Overhead Sectional	2,5	12	0,24 (m/s)	Report Label New
51	000006	C	Industrial	Cfa	N3	S2	Overhead Sectional	4,2	12	0,24 (m/s)	Report Label New
53	00007	F-	Industrial	Csa	N3	S2	Overhead Sectional	2,5	12	0,1 (m/s)	Report Label New

Showing 1 to 7 of 7 entries (filtered from 11 total entries)

First Previous Next Last

One label can be created using another label as template clicking New in the *My Labels* table:

My Labels

Download XLS + New Label

Show 10 entries

Search by Ref. or Type:

Id	Ref.	Energy Class	App. Class	Clima Class	Traffic Class	Size Class	Type	U Value	Air Perm.	Open Speed	Actions
45	0000001	B	Industrial	Dfb	N3	S2	Overhead Sectional	2,42	6	0,3 (m/s)	Report Label New
47	100001	A	Industrial	Dfb	N3	S2	High Speed Flexible	2,5	12	0,5 (m/s)	Report Label New
48	000003X	C	Industrial	Dfb	N3	S2	Overhead Sectional	2,5	12	0,24 (m/s)	Report Label New
49	000004X	C	Industrial	Csb	N3	S2	Overhead Sectional	5	12	0,24 (m/s)	Report Label New
50	0000005	C	Industrial	Cfa	N3	S2	Overhead Sectional	2,5	12	0,24 (m/s)	Report Label New
51	000006	C	Industrial	Cfa	N3	S2	Overhead Sectional	4,2	12	0,24 (m/s)	Report Label New
53	00007	F-	Industrial	Csa	N3	S2	Overhead Sectional	2,5	12	0,1 (m/s)	Report Label New

Showing 1 to 7 of 7 entries (filtered from 11 total entries)

First Previous Next Last



You can access to download every Label and Report pdf files in the labels table. Also, the label list can be exported in Excel format clicking Download XLS.

My Labels

Download XLS + New label

Show 10 entries

Search by Ref. or Type:

Id	Ref.	Energy Class	App. Class	Clima Class	Traffic Class	Size Class	Type	U Value	Air Perm.	Open Speed	Actions
45	0000001	B	Industrial	Dfb	N3	S2	Overhead Sectional	2,42	6	0,3 [m/s]	Report Label New
47	1000001	A	Industrial	Dfb	N3	S2	High Speed Flexible	2,5	12	0,5 [m/s]	Report Label New
48	000003X	C	Industrial	Dfb	N3	S2	Overhead Sectional	2,5	12	0,24 [m/s]	Report Label New
49	0000004X	C	Industrial	Csb	N3	S2	Overhead Sectional	5	12	0,24 [m/s]	Report Label New
50	0000005	C	Industrial	Cfa	N3	S2	Overhead Sectional	2,5	12	0,24 [m/s]	Report Label New
51	000006	C	Industrial	Cfa	N3	S2	Overhead Sectional	4,2	12	0,24 [m/s]	Report Label New
53	00007	F-	Industrial	Csa	N3	S2	Overhead Sectional	2,5	12	0,1 [m/s]	Report Label New

Showing 1 to 7 of 7 entries (filtered from 11 total entries)

First Previous 1 Next Last